

# Assembly Instruction

## Swing-saddle offset

### Vespa Largeframe



#### Contents

- 1 x Swing-saddle offset, stainless steel
- 3 x lens head bolt M8x20 with integrated washer
- 3 x hexagon bolt M7x20
- 3 x washer for M7
- 3 x washer for M8
- 3 x self locking nut M8
- 3 x plastic spacer

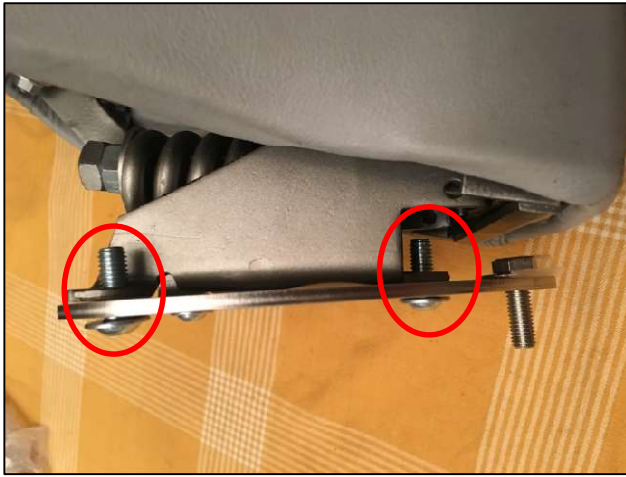


#### Installation

**Step 1:** Insert one M7x20 hexagon bolt together with a washer through the front hole of the plate. Fix the bolt to the plate with some tape.



**Step 2:** Insert the three M8x20 lens head bolt with the integrated washer from the opposite site of the plate. Position: see left picture



**Step 3:** Put the plate with the bolts through the holes of the swing saddle.



**Step 4:** Fasten the bolts on the plate with the M8 self-locking nuts and M8 washers.



**Step 5:** Insert the remaining two M7x20 hexagon nuts through the holes and put the plastic spacers over the threads.



**Step 6:** Fasten the plate to the frame.



No warranty is given on damages or subsequent damages that were caused by an improper installation.  
Due to legal reasons for decoration purposes only.