

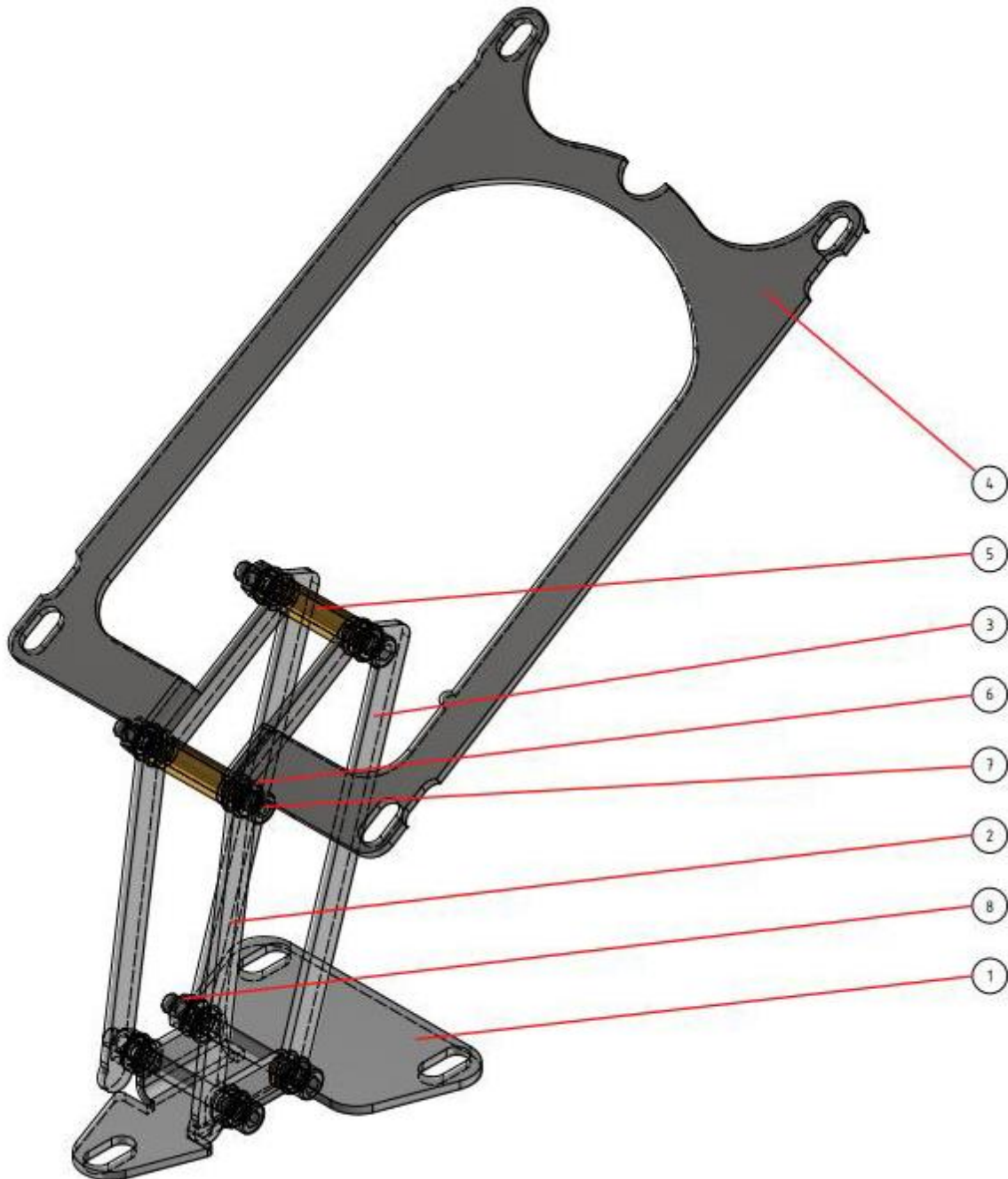
Assembly Instruction Streamline Seats

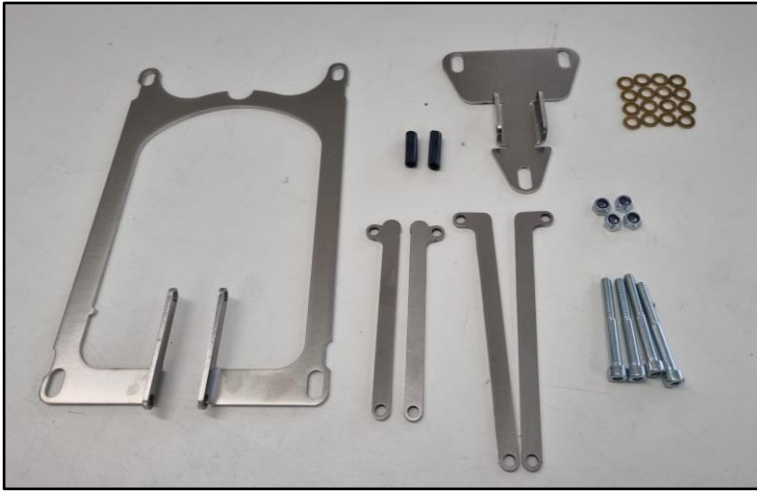
Model "Pace" with rear hinge
Model "Viper" with rear hinge
(Vespa Large Frame Oldie)



Hinge

Position	Part
1	1 x base-plate
2	2 x lever short with stop
3	2 x lever long
4	1 x seat-plate
5	2 x metal spacer l=26 mm
6	16 x brass washer for M6
7	4 x allen bolt M6x55
8	4 x self-locking nut M6





Contents hinge

- 1 x base-plate
- 1 x seat-plate
- 2 x lever front
- 2 x lever rear
- 4 x allen bolt M6x55
- 4 x self-locking nut M6
- 16 x brass washer for M6
- 2 x metal spacer 26 mm



Assembly hinge

Step 1: Attach the short levers at the front of the base-plate with one M6x55 allen bolt, a M6 self-locking nut and four brass washers. Place the brass washers between the allen bolts, the levers and the base-plate.
Orientation of the levers: See picture on the left.



Step 2: Attach the long levers at the back of the base-plate with one M6x55 allen bolt, a M6 self-locking nut and four brass washers. Place the brass washers between the allen bolts, the levers and the base-plate. Orientation of the levers: See picture on the left



Step 3: Attach all four levers to the upper seat-plate with two M6x55 allen bolts, the M6 self-locking nuts and four brass washers. Place the two metal spacers between the allen bolts and the brass washers between the allen bolts, the levers and the seat-plate. Orientation of the seat-plate: see picture on the left. The notch must be on the right side.



Contents seat

- 1 x upholstered seat with lock
- 1 x hinge
- 1 x cover plate
- 2 x key
- 4 x hexagon bolt M7x20
- 1 x locking bracket frame
- 6 x washer M7
- 2 x headless screw M7
- 2 x nut M7
- 8 x spacer nut M6x20
- 2 x rubber buffer D=20 mm , H=15 mm
- 4 x rubber buffer D=25 mm, H=15 mm
- 6 x washer M6
- 2 x lens head bolt M6x10
- 8 x spring ring M6



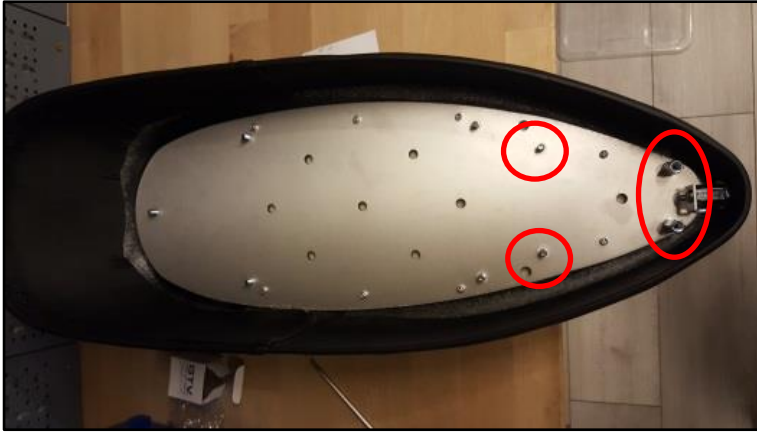
Assembly seat

Step 1: Unscrew the front bolts for the mounting of the old seat as well as for the tank and remove the seat.

Step 2: Unscrew the two rear bolts for the mounting of the tank



Step 3: Remove the cone bolt for the locking mechanism of the old seat.



Step 4: Screw in the four M6x20 spacer nuts together with the M6 washers and M6 spring rings on the four front riveted threads.



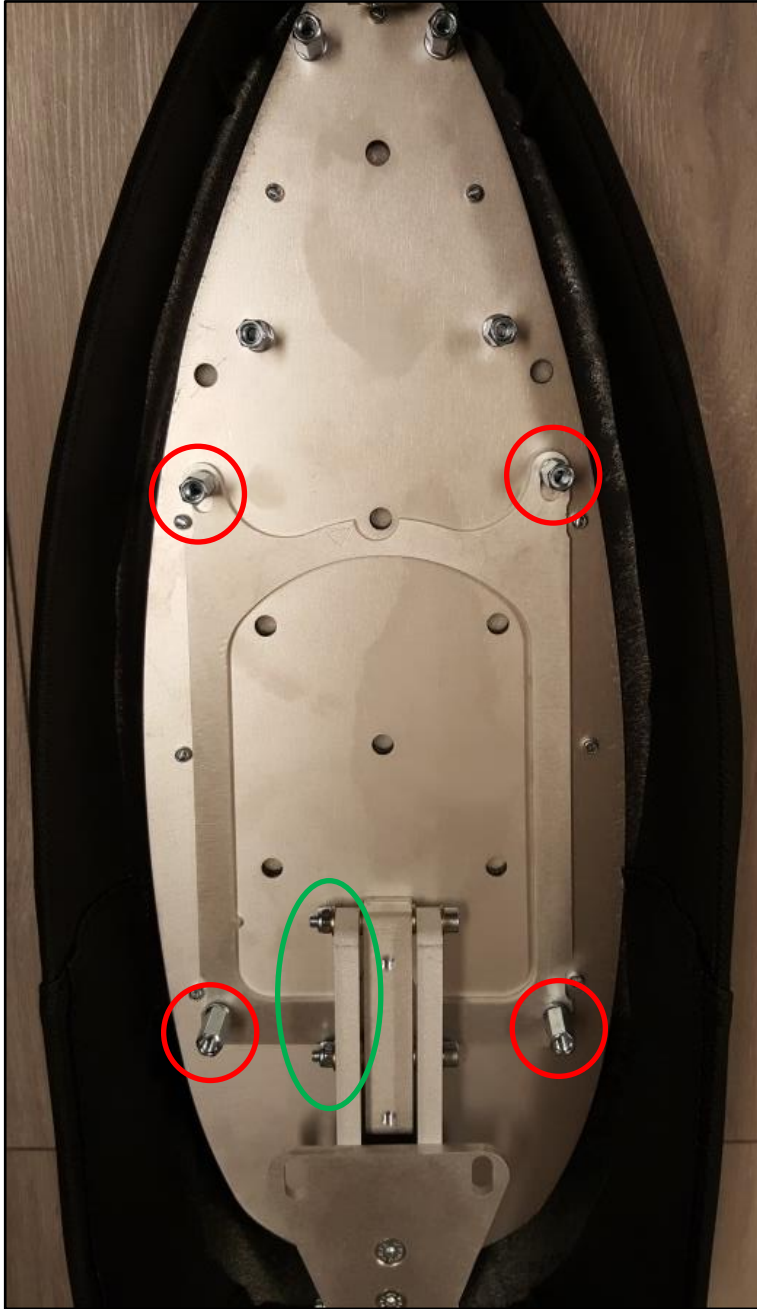
Step 5: Attach the hinge on the frame with the three M7x20 hexagon screws and washers. If necessary, horizontally level the hinge by using appropriate washers in the back.



Step 6: Attach the locking bracket to the frame with the M7x20 hexagon bolt and M7 washer. Direction: see photo on the left.
Hold the bracket in its position with a plier while fastening the screw.



Step 7: Screw in the two M7 headless screws together with the M7 nuts and washers appr. 10 mm into the front of the tank.



Step 8: Attach the seat to the hinge as seen on the left and secure it with the four M6x20 spacer nuts and M6 spring rings.

Step 9: Hinge the seat down and position the seat and/or the locking bracket that is attached to the frame so the seat can be locked.

Tip: A visual check regarding the locked state (lock latch underneath the frame bracket) is possible through the front slit between the seat and scooter frame. Use of a flashlight is helpful here.

Step 10: If the seat falls back down on its own, tighten the M6 nuts on the hinge a bit (see green circle on the left).



Step 11: Mount the cover plate with the two M6x10 lens head bolt, six rubber buffers and six M6 washers.

Buffers front: 2 x D=20 mm / H=15 mm,
Buffers middle and rear: 2 x D=25 mm / H=15 mm.

Adjust the height of the buffers so they evenly lie on the tank when the seat is closed.
Adjust the height of the two front buffers so the seat can still be locked while slightly pressing on the tip.
Secure the height of all buffers with the counter-nuts.



Step 12: Unlock the seat by slightly pressing on the front tip.
Hold the back of the seat while opening so the composite leather doesn't collide with the frame during the opening process.

No warranty is given on damages or subsequent damages that were caused by an improper installation.
Due to legal reasons for decoration purposes only.