

Assembly Instructions

Streamline Seats

Model "Pace" with front hinge
Model "Viper" with front hinge
(Vespa Largeframe Oldie)



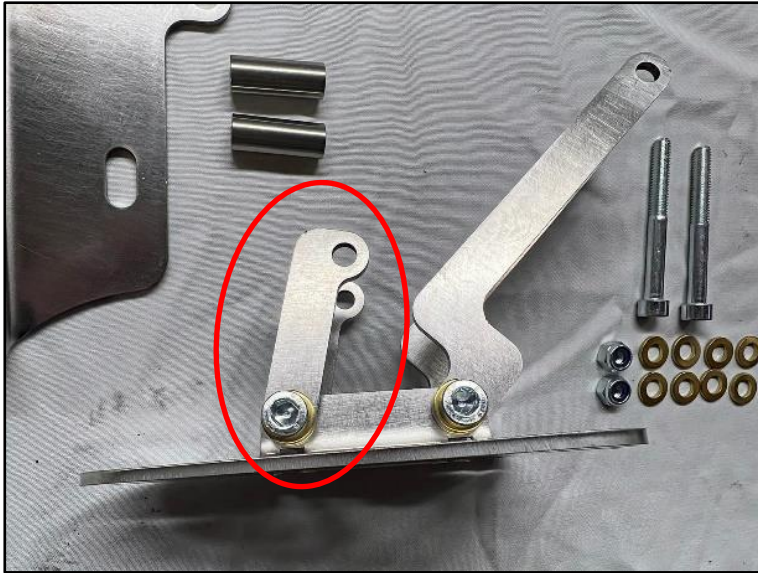
Contents hinge

- 1 x base-plate
- 1 x angled seat-plate, left
- 1 x angled seat-plate, right
- 2 x lever short
- 2 x lever long
- 4 x allen bolt M6x55
- 4 x self-locking nut M6
- 16 x brass washer M6
- 2 x PVC tube 35 mm
- 2 x metal tube l=26 mm

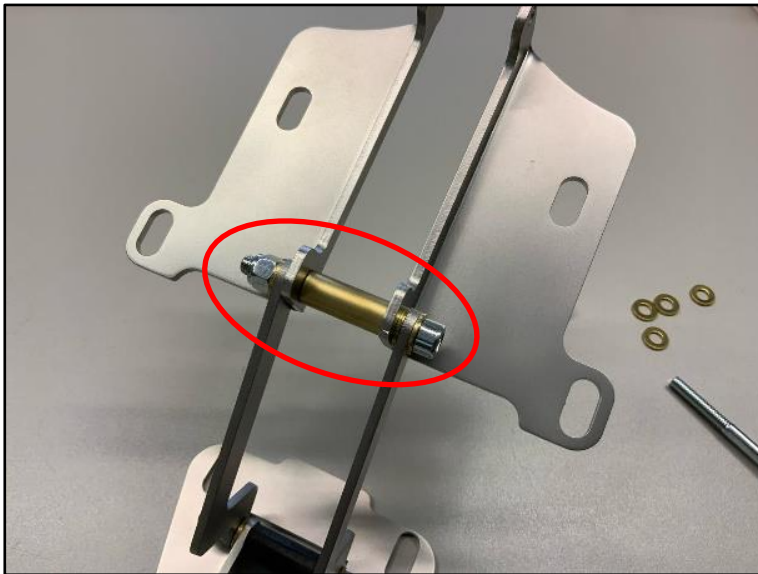


Assembly hinge

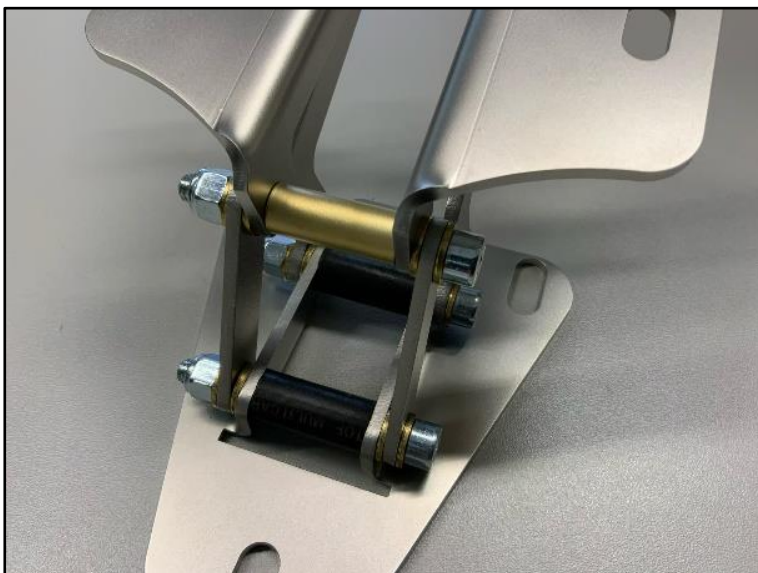
Step 1: Mount the two long levers at the back side of the triangular baseplate together with the black PVC tube, the M6x55 allen bolt, four brass washers and the M6 self-locking nut. Alignment of the levers: see picture on the left.



Step 2: Mount the two short levers in the same way at the front of the triangular baseplate.



Step 3: Mount the left and right angled seat-plate together with the metal tube, the M6x55 allen bolt, four brass washers and the M6 self-locking nut to the rear long levers.

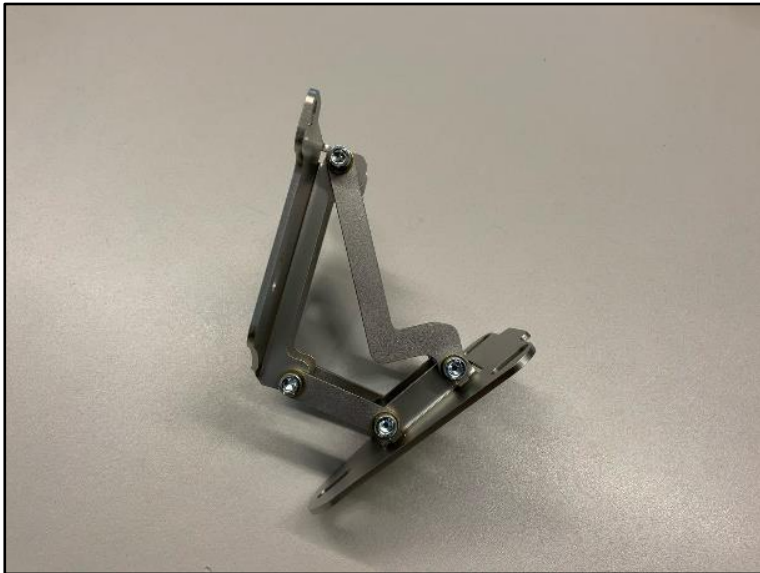


Step 4: Flap the plates forward and mount them to the short front levers with the metal tube, the M6x55 allen bolt, four brass washers and the M6 self-locking nut.

Test if the hinge can be opened and closed without any problems. If necessary, fasten or lose the M6 self-locking nuts accordingly.



Assembled hinge, front view

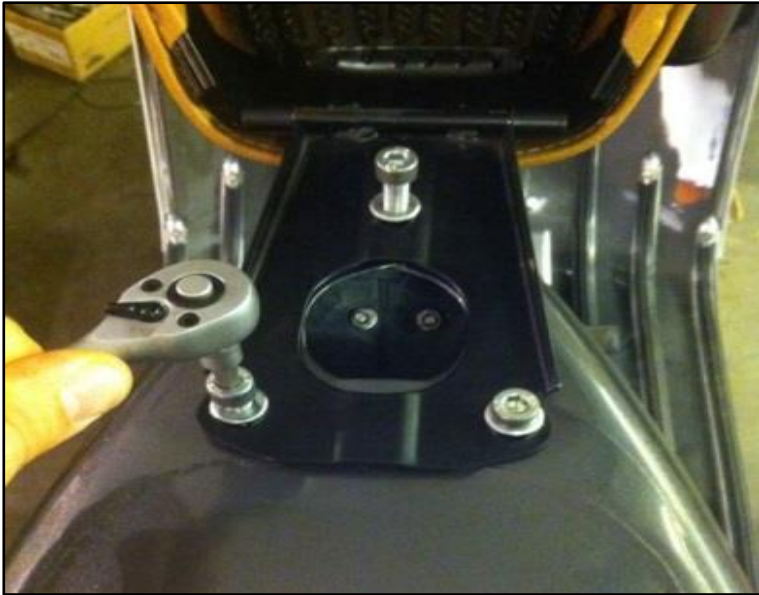


Assembled hinge, side view



Contents seats

- 1 x upholstered seat
- 1 x cover plate
- 1 x front hinge
- 2 x headless screw M7
- 5 x washer M7
- 3 x hexagon bolt M7x20
- 1 x lens head bolt M6x10
- 2 x self-locking nut M6
- 5 x spacer nut M6x20
- 5 x spring ring M6
- 7 x washer M6
- 2 x nut M7
- 4 x rubber buffer D=25 / H=15



Installation seat

Step 1: Unscrew the front bolts for the mounting of the old seat as well as for the tank and remove the seat.

Step 2: Unscrew the two rear bolts for the mounting of the tank.



Step 3: Remove the cone bolt for the locking mechanism of the old seat.



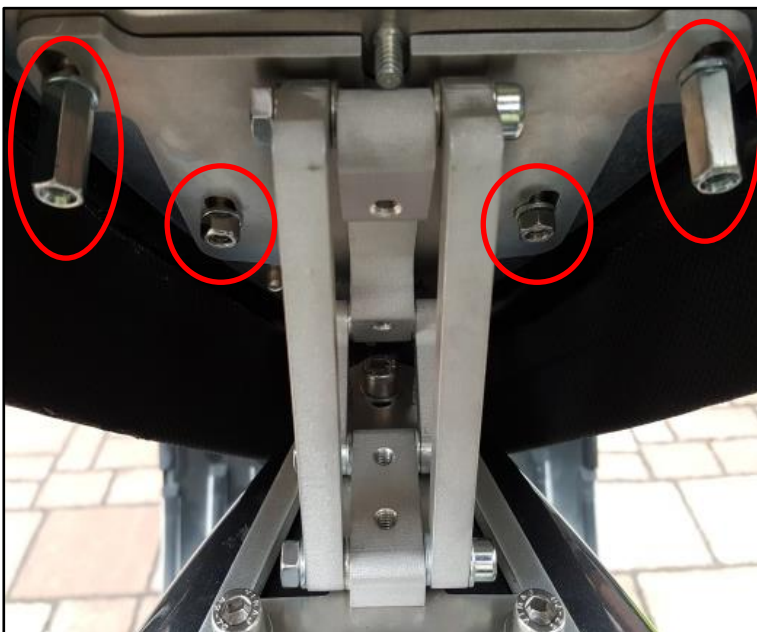
Step 4: Screw in the three M6x20 spacer nuts together with the M6 washers and M6 spring rings on the three rear riveted threads.



Step 5: Adjust hinge in the back with the elongated holes and fasten it on the frame with the three M7x20 hexagon bolts and washer.



Step 6: Screw in the headless screws together with the washers and nuts appr. 10 mm at the back of the tank. Lock the screws with the counter-nuts.



Step 7: Lift up the hinge and connect it to the seat as shown on the left.

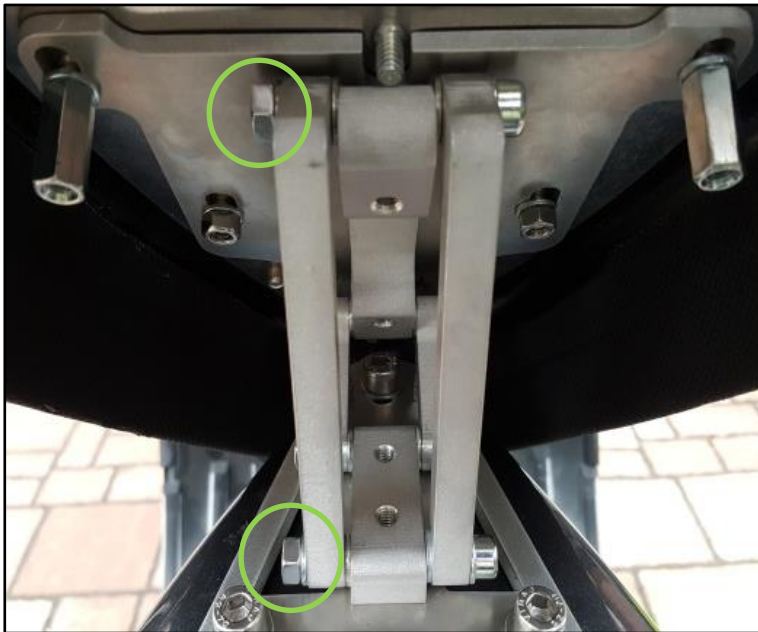
Front: 2 x M6 self-locking nut (no spring rings!)

Back: 2 x M6x20 spacer nut with spring rings

Note: It might be necessary to shorten the arms of the side-panel locking devices by appr. 12 mm so they don't collide with the long arms of the hinge



Step 8: If necessary, adjust the horizontal position of the seat with the help of the elongated holes on the hinge. Mount the cover plate together with the four rubber buffers and M6 washers. In the back, use a M6x10 lens head bolt. Adjust the height of the buffers so they evenly lie on the tank. Lock the height by fastening the counter-nuts.



Step 9: If the seat falls back in its position after lifting it up, simply increase the resistance of the joints by tightening the M6 nuts a little bit.

No warranty is given on damages or subsequent damages that were caused by an improper installation.
Due to legal reasons for decoration purposes only.