

# Assembly Instructions

## Streamline Seats

Model "Curve"  
(Vespa P-Series)



### Scope of supply

- 1 x upholstered seat with mounted lock
- 2 x keys
- 2 x cylinder bolt M8x50
- 2 x cylinder bolt M8x40
- 1 x flat headed bolt M8x20
- 4 x nut M8
- 5 x washer M8
- 1 x locking bracket



### INSTALLATION

#### Step 1:

Unscrew the front bolts for the mounting of the old seat and the tank. Remove the seat.

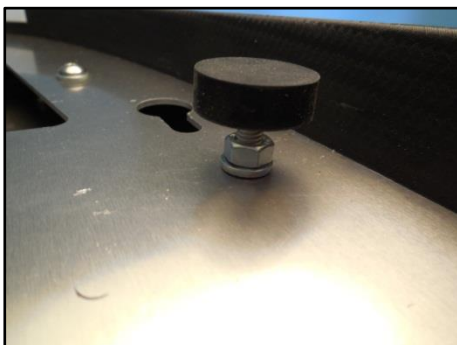
#### Step 2:

Unscrew the two rear bolts for the mounting of the tank.



#### Step 3:

Remove the cone bolt for the locking mechanism of the old seat.



#### Step 4:

Place the seat on the frame and evenly adjust the height of the four rubber buffers (middle and back) so the seat does not touch the frame

Lock the height of the buffers by fastening the counter-nuts.

*Note: The height of the two front rubber buffers will be adjusted in step 7.*



**Step 5:**

Put the M8 nuts on the cylinder bolts. Screw in the bolts together with the M8 washers in the front and back of the tank (front: M8x40, back: M8x50). Slightly tighten the counter-nuts.



**Step 6:**

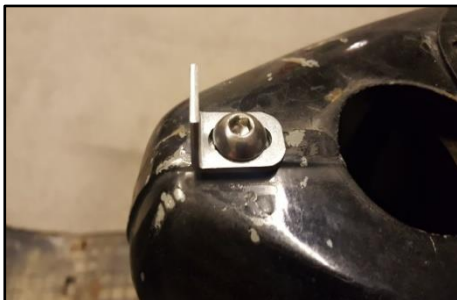
Put the seat on the bolts and push it backwards. Next, pull up the seat in the front and back to determine the vertical clearance. Reduce the clearance to a minimum by adjusting the height of the bolts accordingly. Tighten the counter-nuts afterwards. If the seat can't be put on, simply increase the height of the bolts.

*Tip: Measure the final height of the bolts and write down the values in case the tank has to be removed.*



**Step 7:**

Look through the front slit between the seat and the frame and adjust the height of the two front rubber buffers until they sit closely to the frame. Lock the height of the buffers by fastening the counter-nuts.



**Step 8:**

Mount the locking bracket to the front of the frame together with the M8x20 flat headed bolt as shown on the photo to the left. Place the bracket completely to the front and tighten the bolt.



**Step 9:**

Position the seat on the mounting system right before the locking bracket and slide it backward. Turn and remove the key.

If too much horizontal clearance of the seat is detectable, adjust the clearance by repositioning the locking bracket on the frame.

Removal: Unlock the seat and move it forward by pushing against the back..

No warranty is given on damages or subsequent damages that were caused by an improper installation.  
Due to legal reasons for decoration purposes only.