

Assembly Instruction
Streamline Seats
Model „Rally Sport“ with front hinge
(Vespa Rally)



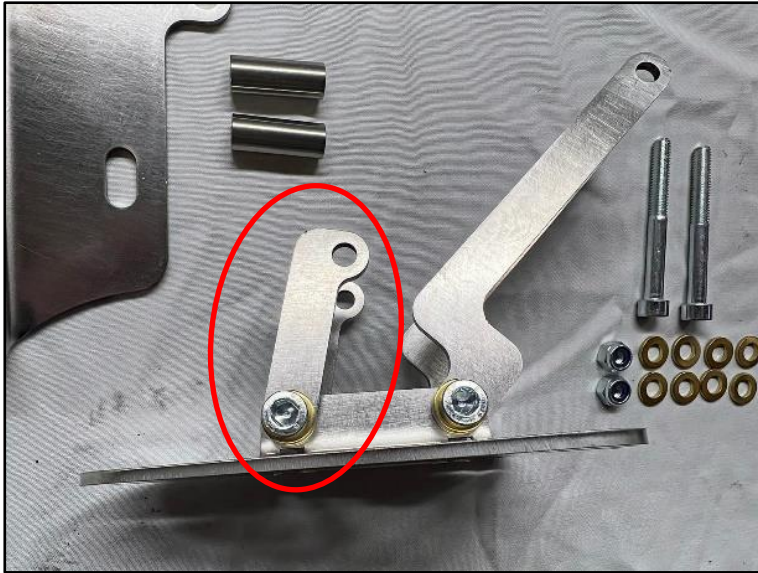
Contents hinge

- 1 x base-plate
- 1 x angled seat-plate, left
- 1 x angled seat-plate, right
- 2 x lever short
- 2 x lever long
- 4 x allen bolt M6x55
- 4 x self-locking nut M6
- 16 x brass washer M6
- 2 x PVC tube 35 mm
- 2 x metal tube l=26 mm

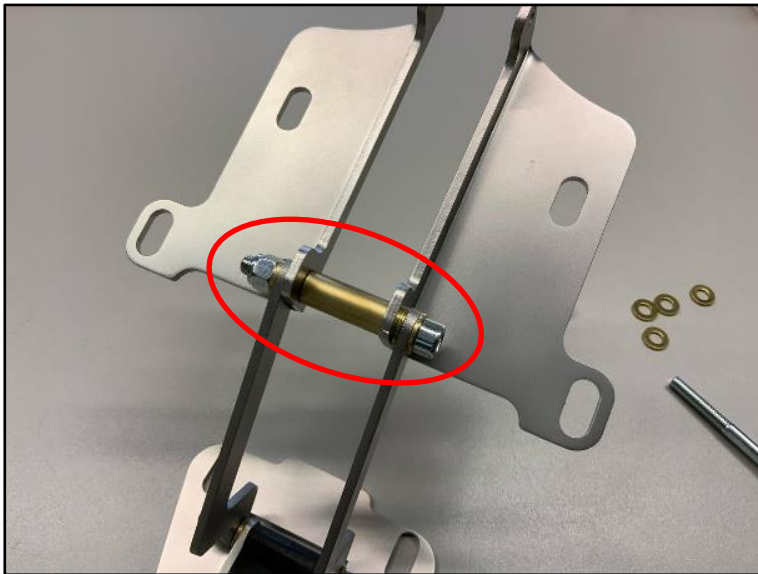


Assembly hinge

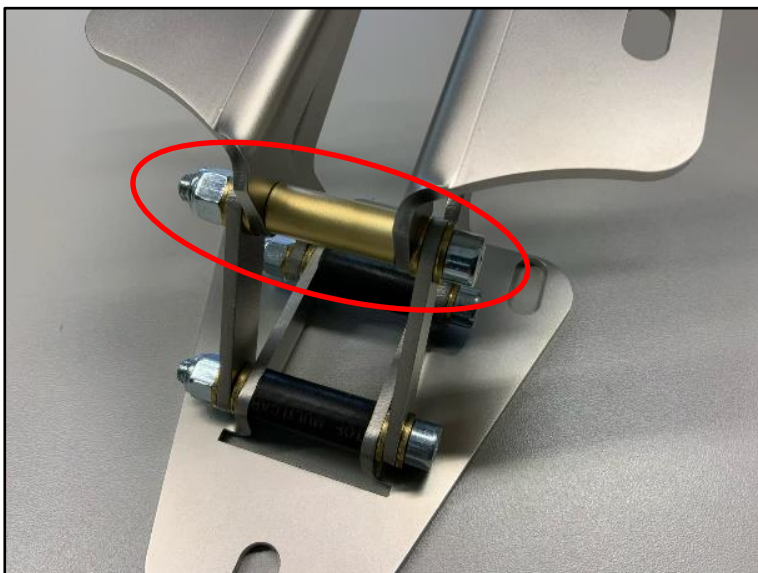
Step 1: Mount the two long levers at the back side of the triangular baseplate together with the black PVC tube, the M6x55 allen bolt, four brass washers and the M6 self-locking nut.
Alignment of the levers: see picture on the left.



Step 2: Mount the two short levers in the same way at the front of the triangular baseplate.



Step 3: Mount the left and right angled seat-plate together with the metal tube, the M6x55 allen bolt, four brass washers and the M6 self-locking nut to the rear long levers.



Step 4: Flap the plates forward and mount them to the short front levers with the metal tube, the M6x55 allen bolt, four brass washers and the M6 self-locking nut.

Test if the hinge can be opened and closed without any problems. If necessary, fasten or lose the M6 self-locking nuts accordingly.



Assembled hinge, front view



Assembled hinge, side view



Contents seat

- 1 x upholstered seat
- 1 x stainless-steel cover plate
- 1 x front hinge (Assembly kit)
- 3 x hexagon bolt M7x20
- 2 x nut M7
- 5 x washer M7
- 2 x headless screw M7
- 2 x lens head bolt M6x20
- 3 x lens head bolt M6x10
- 2 x self-locking nut M6
- 8 x spacer nut M6x20
- 1 x spacer nut M6x30
- 17 x spring ring M6
- 23 x washer M6
- 5 x rubber buffer D=25 / H=15
- 1 x headless screw M6x20
- 2 x countersunk screw M6x16
- 3 x rubber washer M8



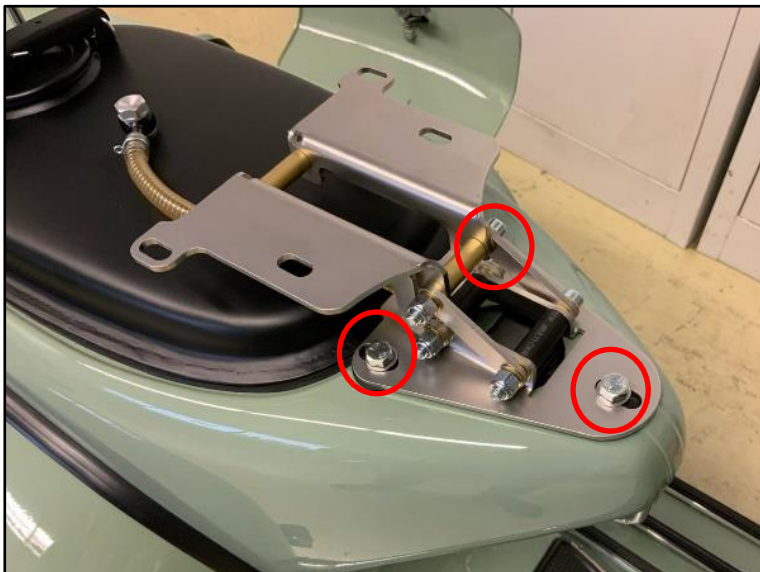
Installation seat

Step 1: Unscrew the front bolts for the mounting of the original seat and tank. Remove the seat.

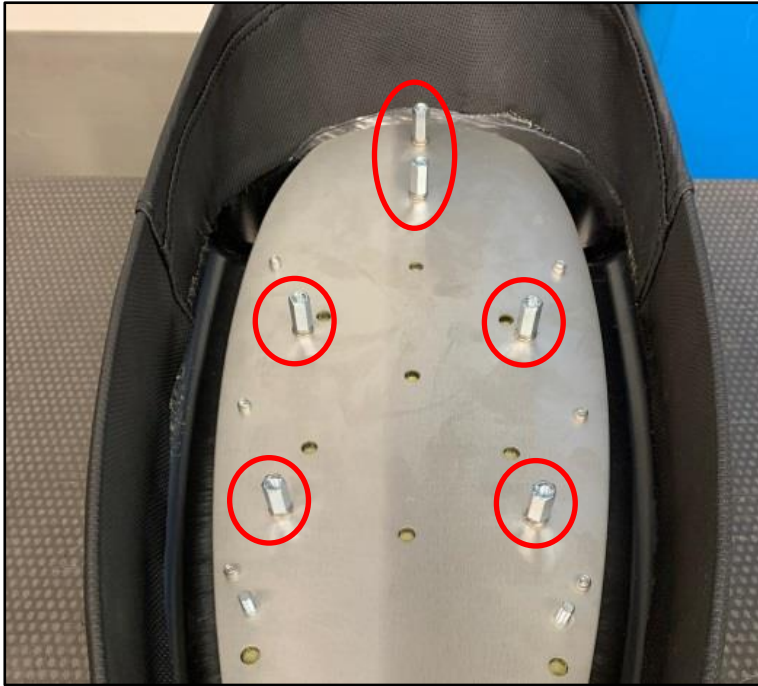
Step 2: Unscrew the two rear bolts for the mounting of the tank.



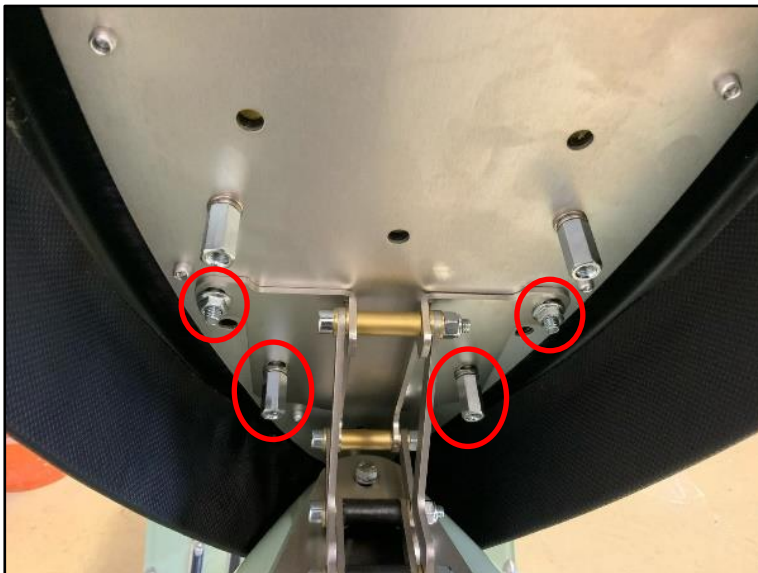
Step 3: Remove the cone bolt for the locking mechanism of the original seat.



Step 4: Place the three M8 rubber washers underneath the hinge and mount the hinge to the frame by using the M7x20 hexagon bolts and M7 washers.



Step 5: Mount the six M6x20 spacer nuts to the inner metal sheet with the M6 washers and M6 spring rings.



Step 6: Lift up the hinge and connect it to the seat as shown on the left.

Front: 2 x M6x20 spacer nut with spring rings

Back: 2 x M6 self-locking nut (no spring rings!)



Step 7: Remove the M6 nuts from all rubber buffers.

Note: To be able to screw the buffers completely into the spacer nuts, the threads of the buffers need to be shortened with a metal saw by around 5 mm.

Install the stainless-steel cover plate with the 3 x M6x10 lens head screws (yellow marking)

Screw one of the rubber buffers on the M6x30 spacer nut and install it at the back of the seat together with the M6x20 headless screw and a washer (blue marking).

Mount two buffers in the middle and front of the seat (red marking).

Close the seat and check if all buffers are lying evenly on the tank. If necessary, put 2 or 3 M6 washers underneath the buffers to increase the height.

Also check if the rear buffer is lying evenly on the frame.



Step 8: Mount the headless screws together with the washers and M7 nuts at the back of the tank.



Step 9: If necessary, adjust the horizontal position of the seat with the help of the elongated holes on the hinge.



Step 10: If the seat falls back in its position after lifting it up, simply increase the resistance of the joints by slightly tightening the M6 self-locking nuts.

No warranty is given on damages or subsequent damages that were caused by an improper installation.
Due to legal reasons for decoration purposes only.