

Assembly Instruction

Streamline Seats

Model: Flow
(Vespa PK)



CONTENTS

- 1 x upholstered seat with lock
- 2 x keys
- 2 x allen bolt M8x40
- 1 x allen bolt M8x25
- 4 x pan-head bolt M8x20
- 3 x nut M8
- 6 x washer M8
- 2 x locking bracket (front and rear)



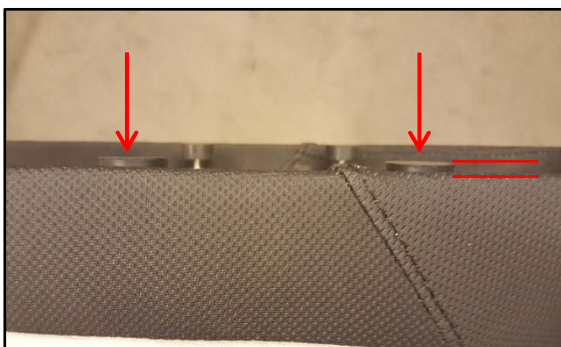
Installation

Step 1:

Unscrew the mounting bolts of the old seat and remove it.

Step 2:

Remove the two rear screws of the locking mechanism.



Step 3:

Evenly adjust the height of the four rubber buffers so they overcome around 5 mm.

Lock the height of the buffers by fastening the counter-nuts.

**Step 4:**

Put the seat on the frame and test if it has a clearance of around 5 mm to the frame. If necessary, adjust the correct height with the help of the rubber buffers (seat should not touch the frame).

**Step 5:**

Screw in the two M8x40 allen bolt for the fixing of the tank (front) together with the M8 washers and nuts. Tighten the counter-nuts slightly.

**Step 6:**

Screw in the M8x25 allen bolt into the rear fastening plate and lock the height with the M8 counter nut. Screw in the plate at the back of the tank with the two M8x20 pan-head bolts.

For test purposes, put the seat on the bolts and push it backwards. Next, pull up the seat in the front as well as in the back to determine the vertical clearance. Reduce this clearance to a minimum by adjusting the height of the bolts accordingly. Tighten the counter-nuts afterwards.

**Step 7:**

Screw in the front locking bracket with the two M8x20 pan-head bolts and move it completely to the back with the help of the elongated holes.

Put the seat on the mounting system and push it backwards into the final position. Lock the seat



Step 9: Reduce the horizontal clearance of the seat by adjusting the front and/or rear locking bracket.

No warranty is given on damages or subsequent damages that were caused by an improper installation. Due to legal reasons for decoration purposes only.