

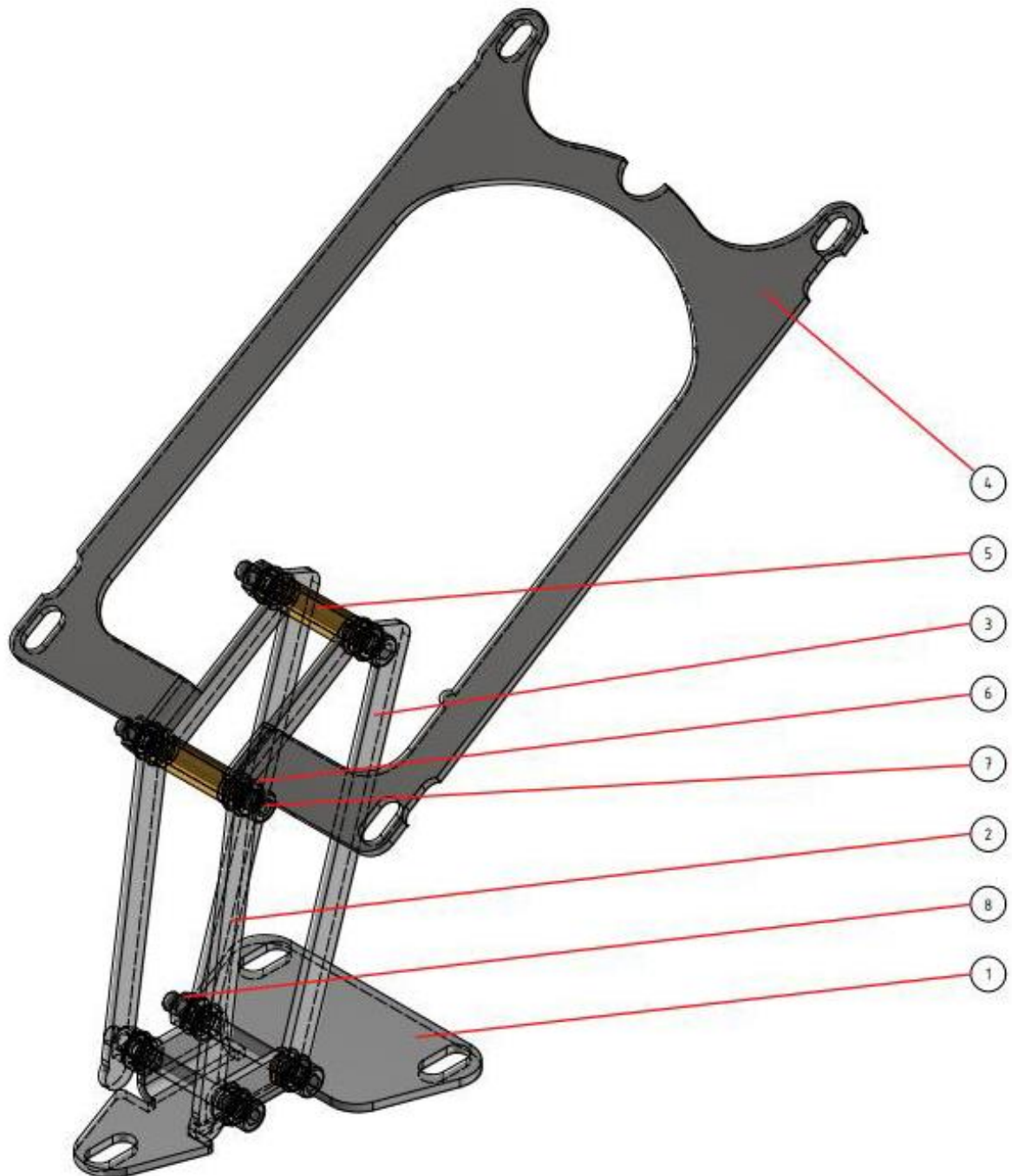
# Assembly instruction

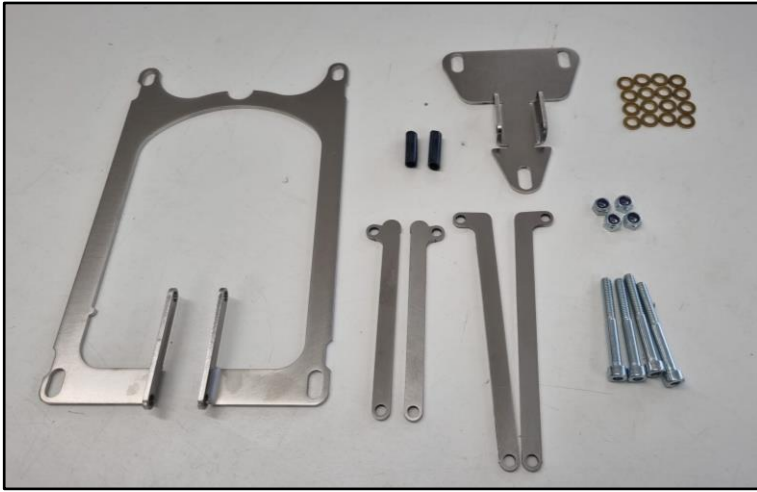
## Rear hinge Upgrade

For Vespa PX



Position	Part
1	1 x base-plate
2	2 x lever short with stop
3	2 x lever long
4	1 x seat-plate
5	2 x metal tube l=26 mm
6	16 x brass washer for M6
7	4 x allen bolt M6x55
8	4 x self-locking nut M6





### **Contents hinge**

- 1 x base-plate
- 1 x seat-plate
- 2 x lever front
- 2 x lever rear
- 4 x allen bolt M6x55
- 4 x self-locking nut M6
- 16 x brass washer for M6
- 2 x metal spacer 26 mm



### **Assembly hinge**

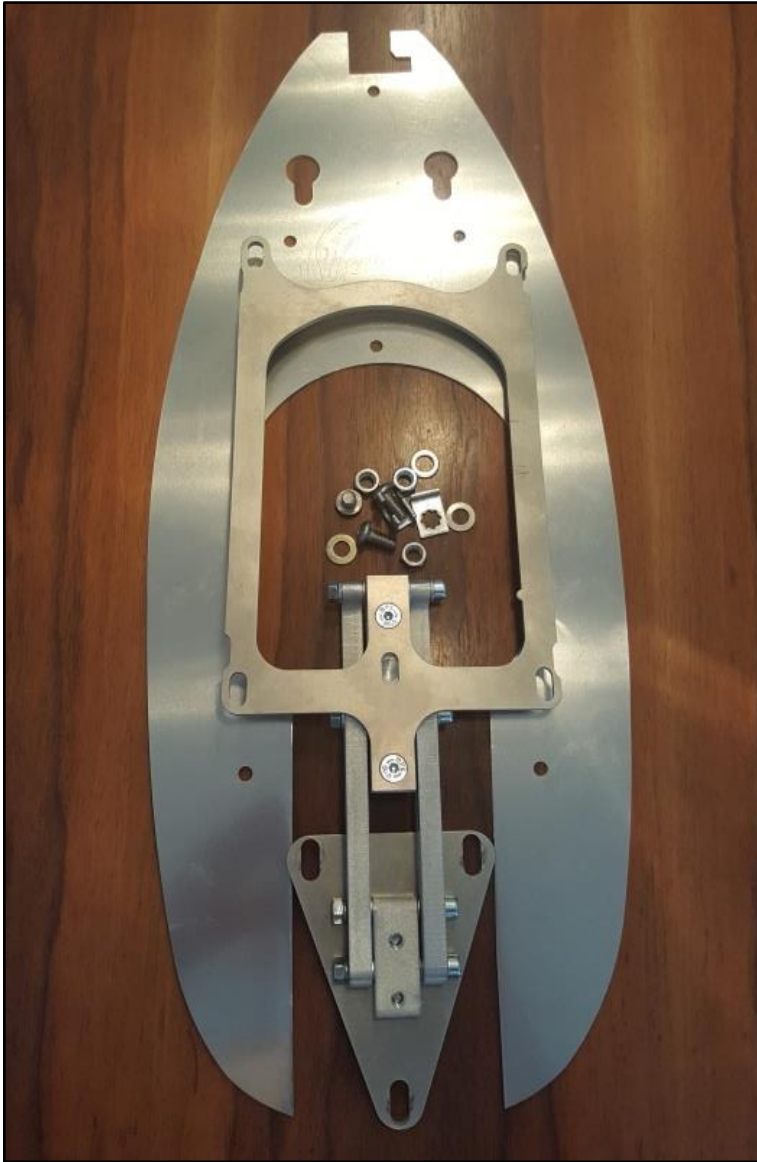
**Step 1:** Attach the short levers at the front of the base-plate with one M6x55 allen bolt, a M6 self-locking nut and four brass washers. Place the brass washers between the allen bolts, the levers and the base-plate. Orientation of the levers: See picture on the left.



**Step 2:** Attach the long levers at the back of the base-plate with one M6x55 allen bolt, a M6 self-locking nut and four brass washers. Place the brass washers between the allen bolts, the levers and the base-plate. Orientation of the levers: See picture on the left



**Step 3:** Attach all four levers to the upper seat-plate with two M6x55 allen bolts, the M6 self-locking nuts and four brass washers. Place the two metal spacers between the allen bolts and the brass washers between the allen bolts, the levers and the seat-plate. Orientation of the seat-plate: see picture on the left. The notch must be on the right side.



### **Contents hinge upgrade**

- 1 x rear hinge
- 1 x cover plate
- 3 x spacer nut M6x20 (for seats V2.0)
- 1 x rubber buffer M6, D=20, H=15 (for seats V2.0)
- 1 x long lock (for seats V3.0)
- 1 x locking bracket frame
- 1 x locking shackle
- 3 x allen bolt M8 x 20
- 5 x washer M8
- 2 x headless screw M8
- 2 x nut M8



### **Installation**

**Step 1:** Remove the seat.

**Step 2:** Remove the four fastening bolts and the front locking bracket.



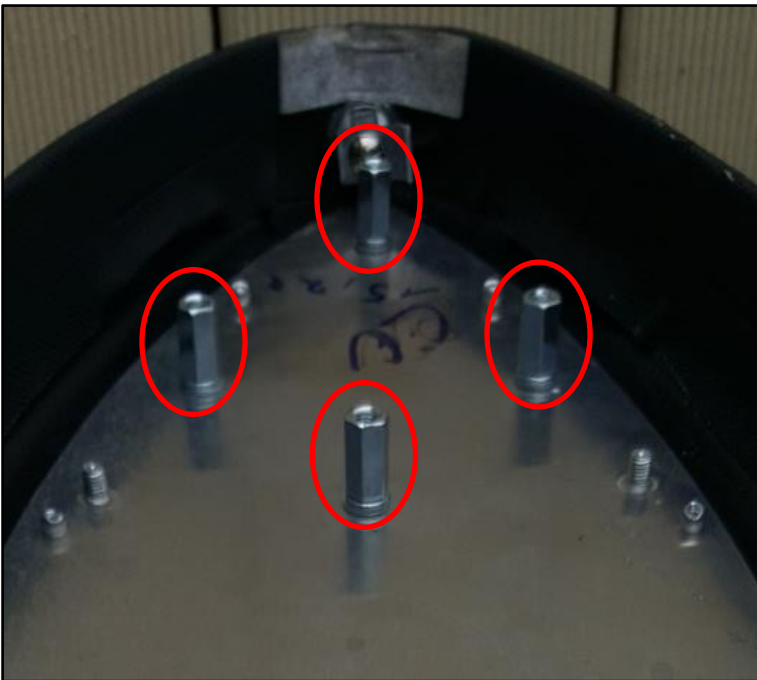
**Step 3:** Attach the hinge to the frame with the three M8x20 allen bolts and washers. If necessary, horizontally level the hinge by using appropriate washers in the back.



**Step 4:** Attach the new locking bracket to the frame with the M8x20 allen bolt and M8 washer. Refer to photo on the left. Hold the bracket in its position with a plier while fastening the screw.



**Step 5:** Screw in the two M8 headless screws together with the washers and nuts appx. 10 mm into the front of the tank.  
Hold the headless screws in position with a plier and fasten the nuts.



**Step 6:** Remove the five rubber buffers and the cover plate.

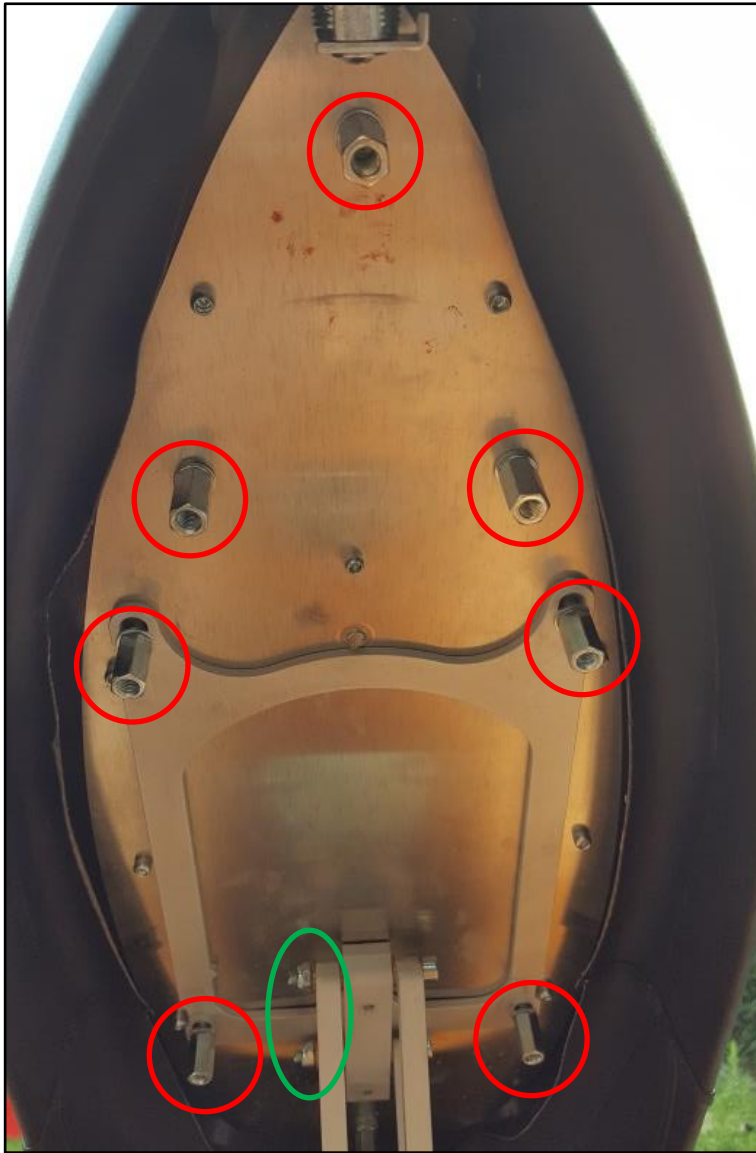
**Step 7:** For seats V2.0  
Remove the three M6x25 and single M6x20 spacer nuts in the front.

For seats V3.0  
Temporarily remove the front spacer nut and replace the short lock against the new long one.



**Step 8:** Hold the lock cylinder in its position with an appropriate spanner and remove the front screw with a large screwdriver (no cross slot!).  
Replace the old locking shackle with the new one according to the photo on the left.

**Important:** Use some threadlocker (such as Loctite - middle strength) for the fastening of the screw.



**Step 9:** For seats V2.0: Screw in the three M6x20 spacer nuts together with the washers and retainer rings at the front of the seat

**Step 10:** Remove the four spacer nuts in the back, position the seat on the hinge as shown on the left and screw the 4 spacer nuts back in.

**Important:** *Also use some threadlocker here for the spacer nuts.*

**Step 11:** Hinge the seat down and position the seat and/or the locking bracket together so the locking mechanisms are aligned and the seat can be locked.

*Tip:* A visual check regarding the locked state (lock latch underneath the frame bracket) is possible through the front slit between the seat and scooter frame. Use of a flashlight is helpful here.

**Step 12:** If the seat falls back down on its own, tighten the M6 nuts on the hinge a bit (please refer to the green circle on the photo on the left).



**Step 13:** Set the new coverplate in place and screw in the four original rubber buffers. Adjust the height of the buffers so they evenly lie on the tank when the seat is closed.

For seats V2.0: Screw in the M6 rubber buffer (D=20 mm, H=15 mm) in the front. Adjust the height of the buffer so the seat can still be locked while slightly pressing on the tip.

For seats V3.0: screw in the two original buffers in the front

Secure the desired height of all buffers with the counter-nuts.



**Step 14:** Unlock the seat by slightly pressing on the front tip. Hold the back of the seat while opening so the composite leather doesn't collide with the frame during the opening process.

No warranty is given on damages or subsequent damages that were caused by an improper installation.  
Due to legal reasons for decoration purposes only.