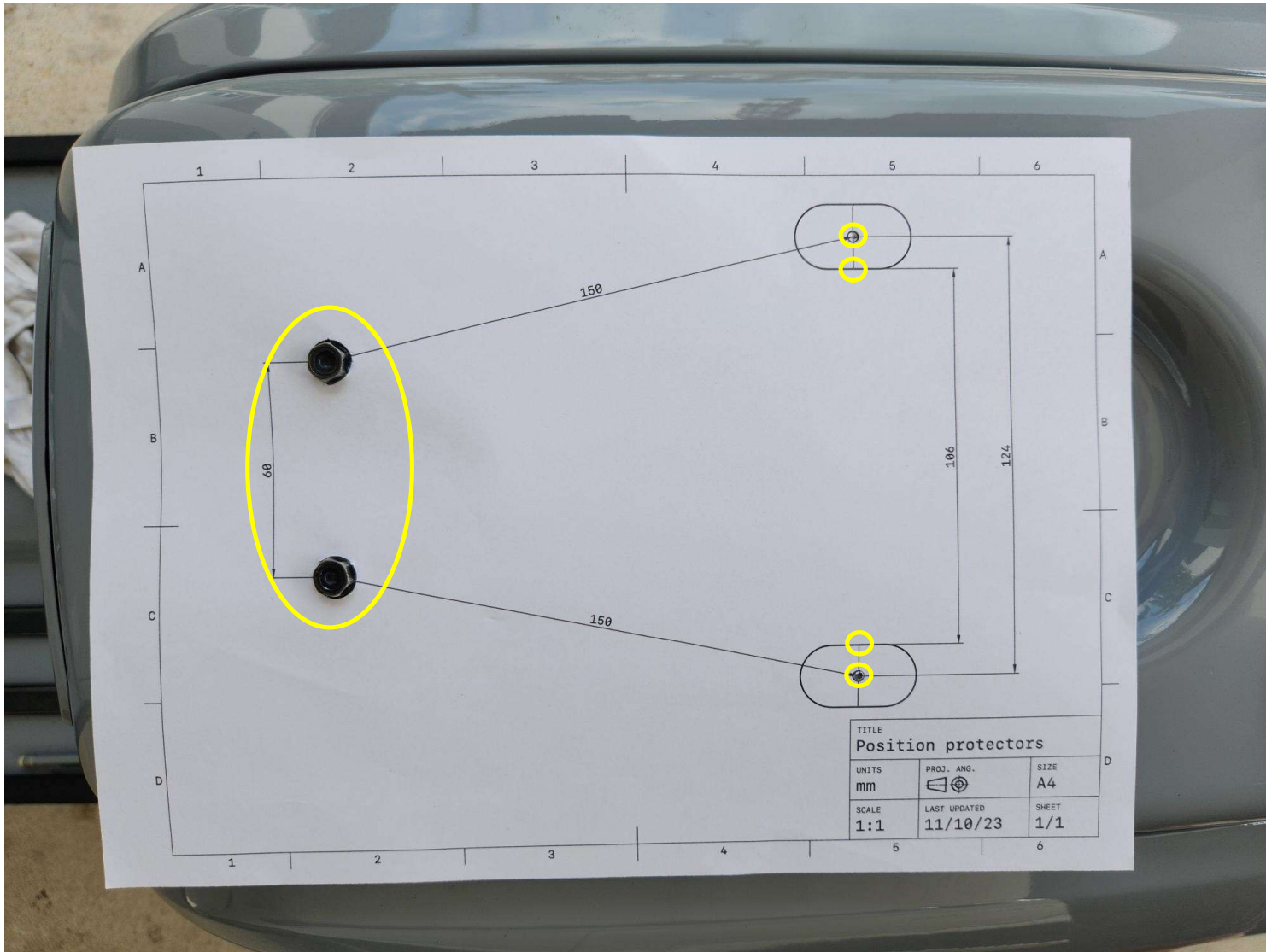


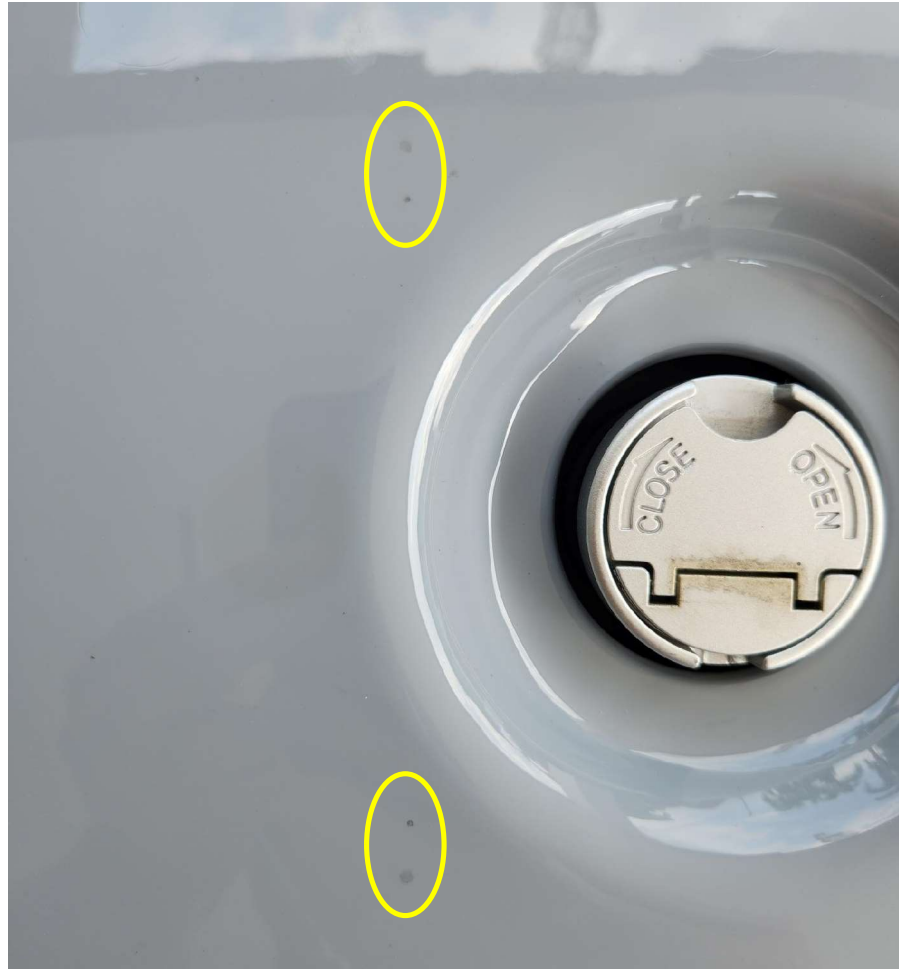
Generate a hard copy of the template at a 1:1 scale, then use a ruler to verify the accuracy of the indicated distances above



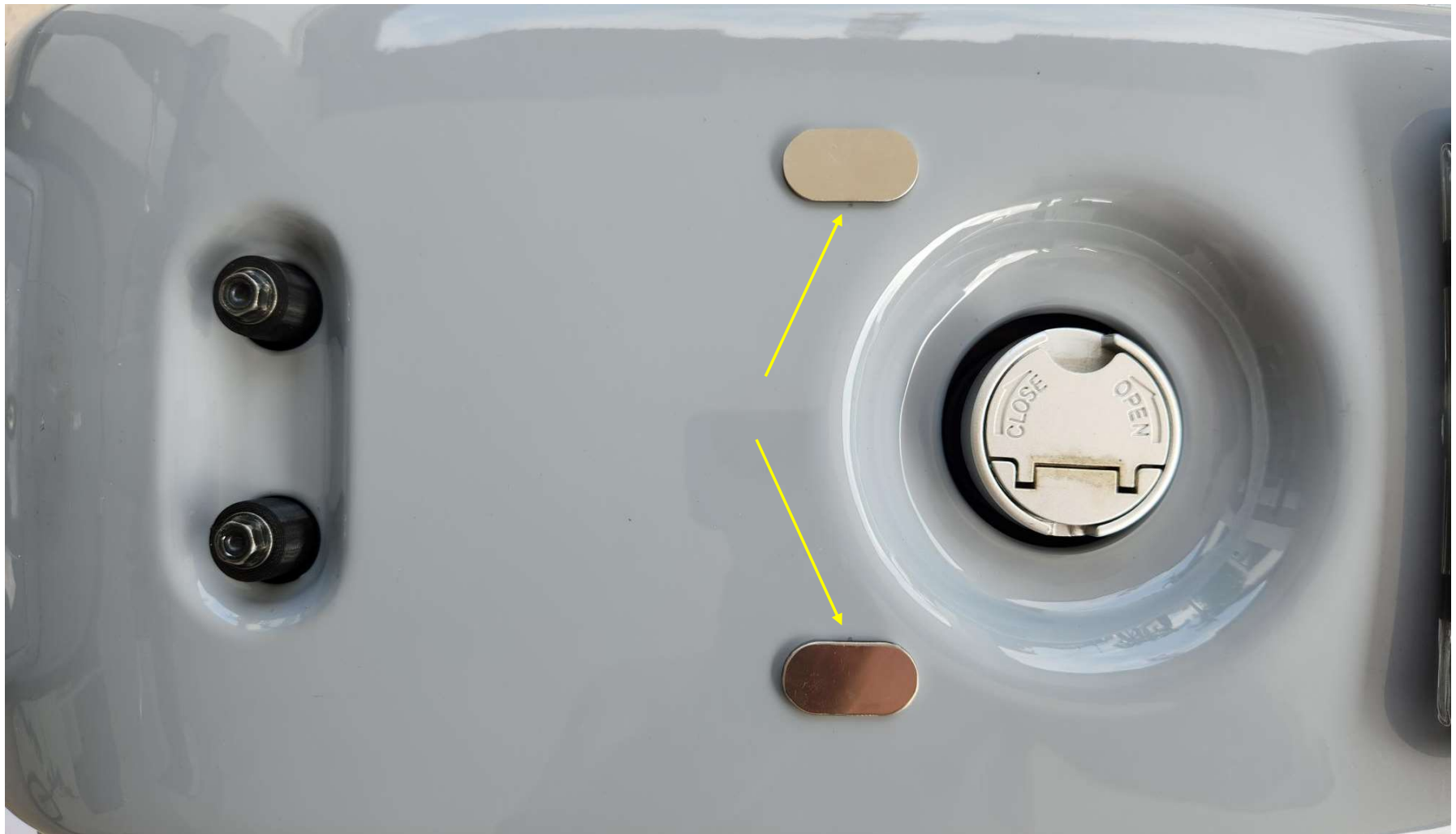
Fasten the two bolts along with the spacers at the front of the frame.



Remove the two front circles from the template and create four small holes in the paper where the protectors will be positioned. Align the template over the two front screws..



Use a pencil to create four marks on the frame by following the template.



Adhere the two protectors to the frame at the designated positions as shown in the above picture.